

||| INTERTRADER

DESKTOP PLATFORM USER GUIDE

TABLE OF CONTENTS

1. Account menu	3
1.1. Setting up a new password	3
1.2. Account performance	3
2. Setting up a workspace	5
2.1. Opening a new workspace	5
2.2. Adding a new panel	5
2.3. Moving panel locations	5
2.4. Adding and removing data fields	6
2.5. Linking panels	7
3. Setting up watchlists	9
3.1. Creating a new watchlist	9
3.2. Adding instruments to a watchlist	9
3.3. Searching for an instrument	10
3.4. Removing instruments	10
4. Market information	11
5. Placing orders	12
5.1. Selecting an instrument	12
5.2. Placing orders via the order entry panel	13
5.3. How to view filled orders	13
6. Amending and cancelling orders	14
6.1. Locating working orders	14
6.2. Cancelling a limit order	14
6.3. Changing a limit to a market order	14

Spread betting and CFDs are complex instruments and come with a high risk of losing money rapidly due to leverage. 73% of retail investor accounts lose money when trading these products with this provider. You should consider whether you understand how these products work and whether you can afford to take the high risk of losing your money.

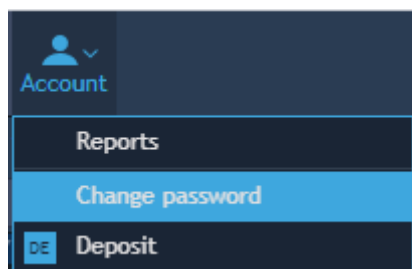
Intertrader is a trading name of Intertrader Limited which is owned and controlled by GVC Holdings PLC. Intertrader Limited is authorised by the Gibraltar Financial Services Commission and subject to limited regulation by the Financial Conduct Authority. Details about the extent of our regulation by the Financial Conduct Authority are available from us on request. Registered address: Suite 6, Atlantic Suites, Europort Avenue, Gibraltar.

7. Closing positions	15
7.1. Locating open positions	15
7.2. Closing individual or multiple positions	15
8. Viewing price charts	16
9. Deposits and withdrawals	17
10. Running reports	18

1. ACCOUNT MENU

1.1. Setting up a new password

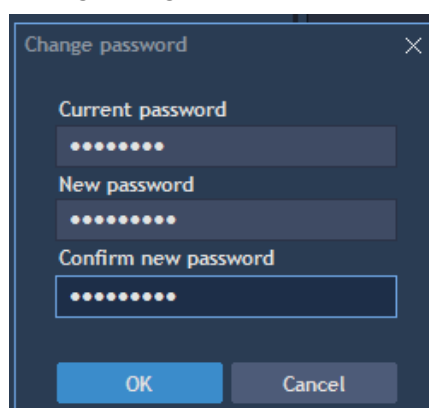
At the top of the platform, select the drop-down next to Account.
Click 'Change password'.



Enter the password you currently use to access the platform.

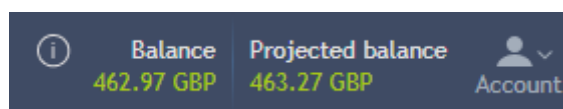
Enter your desired new password.

Confirm the new password by entering this again.



1.2. Account performance

To see an overview of your account statistics, hover over the account section at the top of the platform and click.



Within the pop-up window you can find the following account information:

- **Balance** – Total cash held on the account (deposited funds and realised profit/loss)
- **Projected balance** – Total cash held on the account plus/minus your running profit/loss on open positions; this is the live valuation of your account
- **Available funds** – The total amount of funds which can be used for trading
- **Initial margin requirement** – The sum of your margin requirements across all open positions
- **Open gross P/L** – The total profit/loss on all open positions, recalculated in real time
- **Open net P/L** – The total profit/loss on all open positions, including any fees
- **# Positions** – Total number of current open positions
- **# Orders** – Total number of orders you currently have working on the platform

▼ General	
Balance	2,371.27 GBP
Projected balance	2,620.05 GBP
Available funds	1,949.60 GBP
▼ Margin	
Initial margin req.	343.67 GBP
Stop out level	200 %
▼ Account activity	
Open gross P/L	248.78 GBP
Open net P/L	248.78 GBP
# Positions	3
# Orders	1

Stop out level (automatic closure)

On the new platform you can see the automatic closure level for your account within the account performance window. This is called your 'stop out level' and is typically 200% for standard Intertrader accounts.

Please note that this is slightly different to the way we calculated your automatic closure level on the old platform, although the margin-to-equity ratio remains the same.

On the old platform we would calculate your live valuation as a percentage of your total margin requirement. If this percentage fell to 100% we would give you a margin call, and if it subsequently fell to 50% we would automatically close your open positions to prevent further losses.

On the new platform we calculate your total margin requirement as a percentage of your live valuation. If this percentage rises to 100% we will give you a margin call, and if it subsequently rises to 200% we will automatically close your open positions to prevent further losses.

It is important to note that our thresholds for automatic closure have not changed. We are simply now calculating margin as a percentage of account equity, rather than equity as a percentage of margin.

For example, say your total margin requirement is £20,000 and your projected balance (i.e. live valuation) is £16,000:

- On the old platform we would calculate that £16,000 (equity) is 80% of £20,000 (margin). Should your equity fall to £10,000, i.e. 50% of your margin, we would automatically close your open positions.
- On the new platform we calculate that £20,000 (margin) is 120% of £16,000 (equity). Should your equity fall to £10,000, i.e. so that your margin is now 200% of your equity, we will automatically close your open positions.

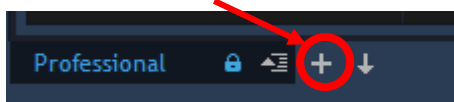
2. SETTING UP A WORKSPACE

2.1. Opening a new workspace

Our platform gives you immediate visibility over watchlists, positions, charts, order entries, working orders, order history and filled orders.

You have the power to customise your own workspace or use a predefined terminal layout. To begin you can either use our preloaded layout or start fresh and design your own.

To open a blank workspace, click on the plus symbol at the bottom of the platform.

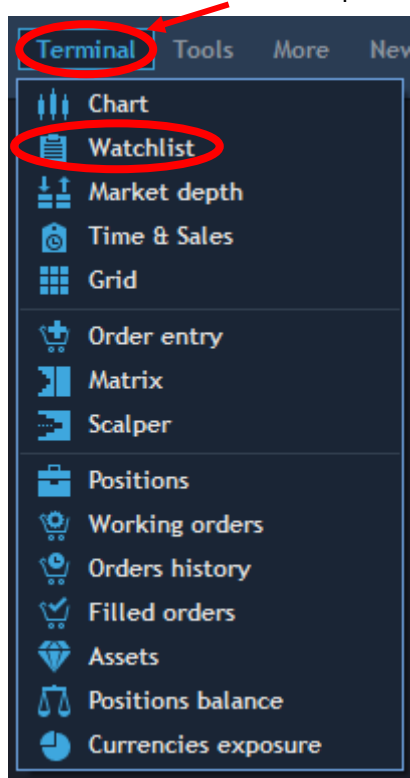


A blank workspace will be loaded onto the platform.

2.2. Adding a new panel

You can customise your own workspace by adding a range of different panels.

All the different panels can be found under Terminal at the top-left of the platform.



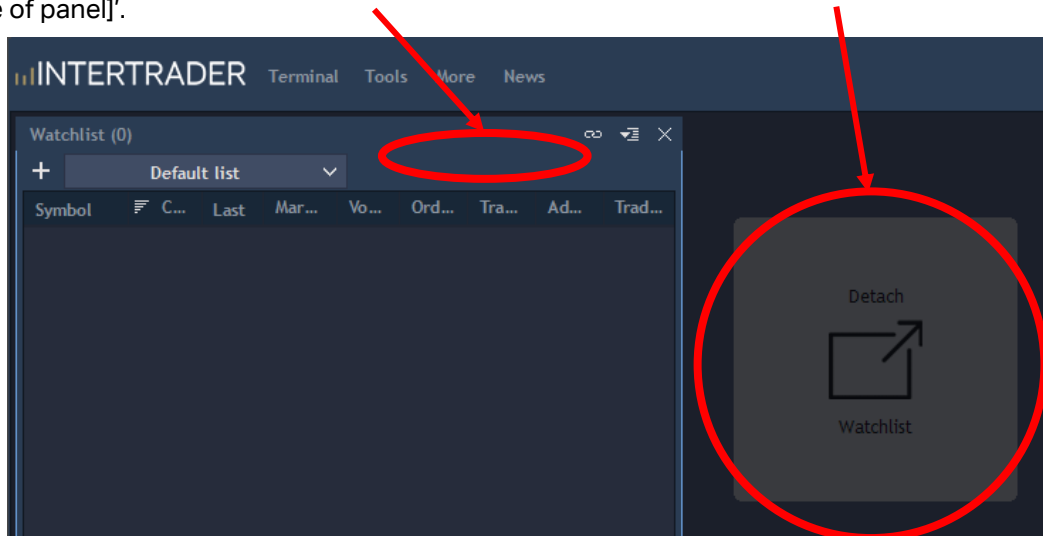
From the pop-up, select the panel functionality you would like to add to your workspace. For example, 'Watchlist' to add a watchlist panel.

The panel will now appear in your custom workspace.

2.3. Moving panel locations

Click and drag the border of a panel to adjust its size. This will also adjust the size of adjacent panels accordingly.

To move a panel, click at the top of the panel and drag until you see a grey box entitled 'Detach [name of panel]'.



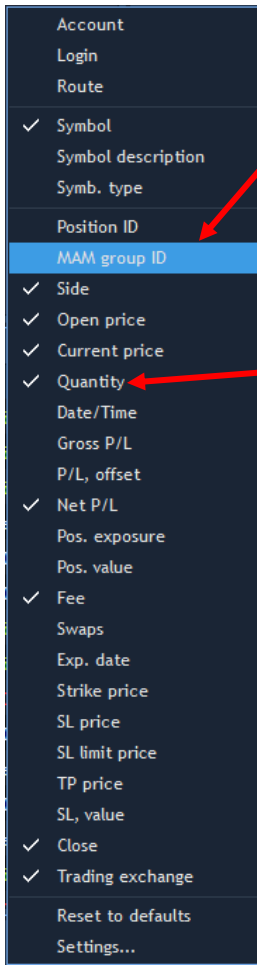
Drag the grey box and drop it wherever you would like, using the onscreen arrows to guide your new location. Again, the other panels will adjust accordingly to create your customised workspace.

2.4. Adding and removing data fields

Each panel gives you access to a wide variety of data, with fully customisable table columns.

To change the data shown, first right-click on the column headings to display a list of data fields that can be added or removed from the panel.

Symbol	Side	Quantity	Open price	Current pri...	Fee	Net P/L	Close	Trading exc...
LAND SECURITIES GROUP...	Long	50,000	950.95	547.45	0.00 GBP	-222,046.4...	✕	LSE
BRITISH LAND CO PLC SB	Long	100,000	443.980	353.145	0.00 GBP	-91,494.39...	✕	LSE
LAND SECURITIES GROUP...	Long	100,000	918.81	547.45	0.00 GBP	-373,206.1...	✕	LSE
INTU PROPERTIES PLC SB	Long	216,875	104.098	Not available	0.00 GBP	Not available	✕	LSE
ASIMILAR GROUP PLC SB	Long	1,250,000	40.100000	27.972000	0.00 EUR	-15,194.02...	✕	LSE
EURASIA MINING PLC SB	Long	1,000,000	2.8042	22.5000	0.00 EUR	19,655,971...	✕	LSE
BRITISH LAND CO PLC SB	Long	100,000	447.401	353.145	0.00 GBP	-94,915.77...	✕	LSE
HAMMERSON PLC SB	Long	200,000	114.895	266.385	0.00 GBP	302,774.03...	✕	LSE
CAPITAL AND COUNTIES P...	Long	50,000	240.996	129.470	0.00 GBP	-60,002.50...	✕	LSE
EURASIA MINING PLC SB	Long	2,000,000	3.6286	22.5000	0.00 GBP	376,652.17...	✕	LSE
ASIMILAR GROUP WTS 6P...	Long	2,000,000	0.000000	Not available	0.00 EUR	Calculating...	✕	LSE
EURASIA MINING PLC SB	Long	830,000	3.1036	22.5000	0.00 GBP	160,668.80...	✕	LSE
NMC HEALTH PLC CFD	Long	5,000	799	Not available	30.00 GBP	Not available	✕	LSE
LAND SECURITIES GROUP...	Long	50,000	923.92	547.45	0.00 GBP	-191,614.9...	✕	LSE
CAPITAL AND COUNTIES P...	Long	50,000	244.544	129.470	0.00 GBP	-60,002.50...	✕	LSE



Click on the name of the data field you wish to add to the panel. A tick will appear next to this item in the list and your new column will be added to the panel.

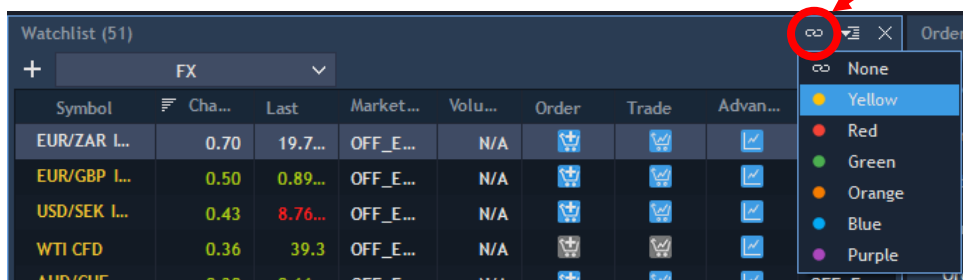
To remove data from your panel, simply click on the name of the data field. The tick will disappear next to this item and the column will be removed from your panel.

2.5. Linking panels

Panels can be linked to one another, so that instruments selected in one panel are automatically entered into the linked panel.

For example, linking the watchlist to the order entry panel means that, when you click on an instrument in the watchlist, it is entered into the order entry panel automatically with no need to complete two separate searches.

To link panels to each other, first locate the link button at the top-right corner of the first panel.



Select a colour for the first panel and repeat this process by selecting the same colour on any other panels you wish to link.

In the example below you can see a watchlist linked to the order entry panel, so that the instrument selected in the watchlist is automatically copied into the order entry panel.

Panels can be linked by more than one colour, so the customisation options are vast.

Watchlist (51) Order entry AUD/USD IT CFD

Symbol	Cha...	Last	Market...	Order	Trade	Ad...	Tra...
AUD/CHF...	0.28	0.66...	OFF_E...				OF...
AUD/NZD...	0.24	1.08...	OFF_E...				OF...
EUR/PLN...	0.23	4.44...	OFF_E...				OF...
AUD/USD...	0.23	0.72...	OFF_E...				OF...
SILVER CFD	0.17	26.944	OFF_E...				OF...
EUR/GBP...	0.17	0.89...	OFF_E...				OF...
EUR/CZK L...	0.17	26.4...	OFF_E...				OF...
AUD/JPY...	0.14	77.488	OFF_E...				OF...
EUR/SEK L...	0.12	10.3...	OFF_E...				OF...
EUR/NOK...	0.09	10.5...	OFF_E...				OF...

Account: Testaccount

Symbol: **FX AUD/USD IT CFD**

Side: Buy Sell

Quantity: 1

Order type: Manual

TIF: Day

Counterparty:

Price: 0.00000001

Date: 08/09/2020 07:55:27

3. SETTING UP WATCHLISTS

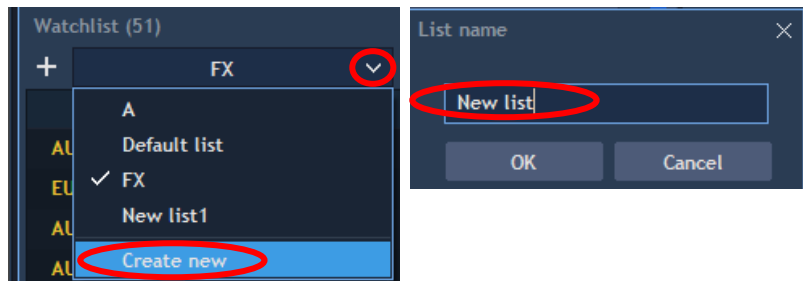
3.1. Creating a new watchlist

The watchlist panel allows you to create as many different instrument watchlists as you like, making it easy to track movements within specific groups of markets.

To create a new watchlist, first select the drop-down arrow next to the current watchlist name.

Select 'Create new'.

Enter a new name for the watchlist in the pop-up box.



3.2. Adding instruments to a watchlist

Select the '+' symbol to add new instruments to a watchlist.

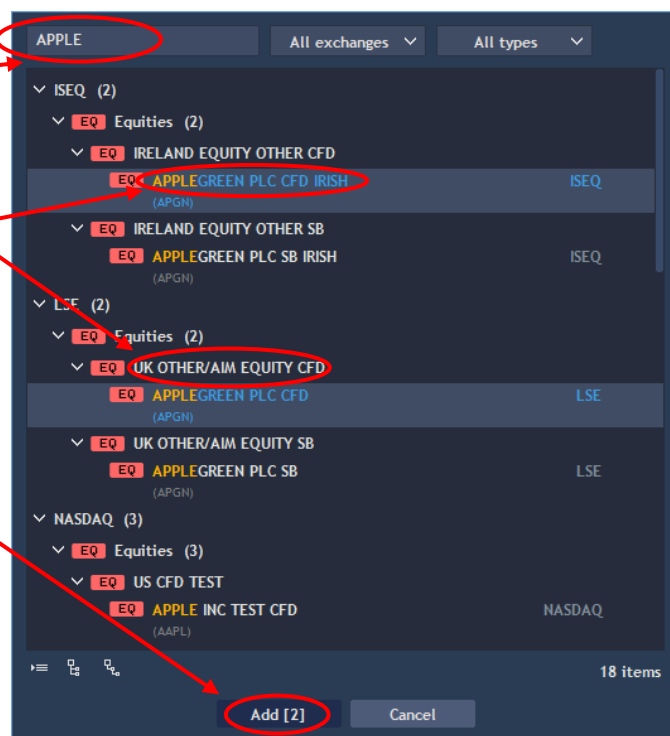
Individual instruments or instrument groups can be added to a watchlist.

To add individual instruments, enter the name of the market you would like to add in the search bar.

Click on the market you need to add.

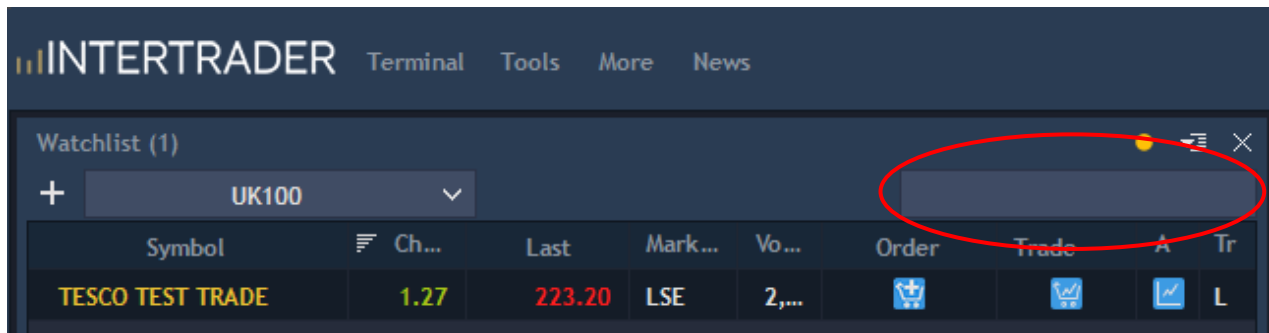
If you want to add more than one instrument, hold the Ctrl button and select all the instruments you need to add.

Once all instruments have been selected, click 'Add' at the bottom of the pop-up.



3.3. Searching for an instrument

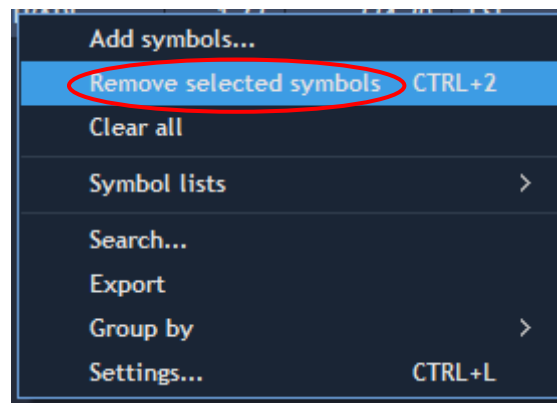
At the top of the watchlist panel, right-click to enable the search toolbar for looking up instruments.



3.4. Removing instruments

To remove an instrument from a watchlist, right-click on the instrument and select 'Remove selected symbols' from the drop-down.

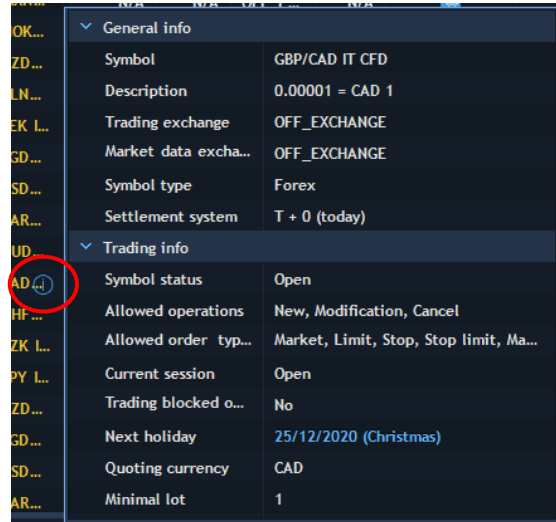
The instrument will be removed.



4. MARKET INFORMATION

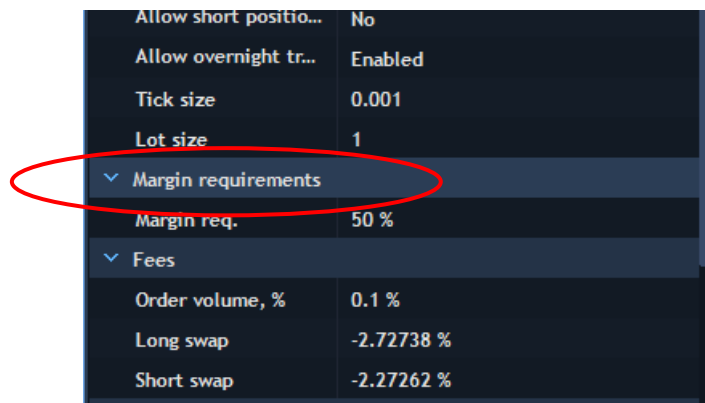
To find additional market information on the platform, go to the watchlist and hover on an instrument until the information button is displayed.

Click on the information button and the relevant market information will be displayed. Alternatively, right-click and select 'Symbol info'.



General info	
Symbol	GBP/CAD IT CFD
Description	0.00001 = CAD 1
Trading exchange	OFF_EXCHANGE
Market data excha...	OFF_EXCHANGE
Symbol type	Forex
Settlement system	T + 0 (today)
Trading info	
Symbol status	Open
Allowed operations	New, Modification, Cancel
Allowed order typ...	Market, Limit, Stop, Stop limit, Ma...
Current session	Open
Trading blocked o...	No
Next holiday	25/12/2020 (Christmas)
Quoting currency	CAD
Minimal lot	1

Scroll down the symbol information panel to find the margin requirements for this market.



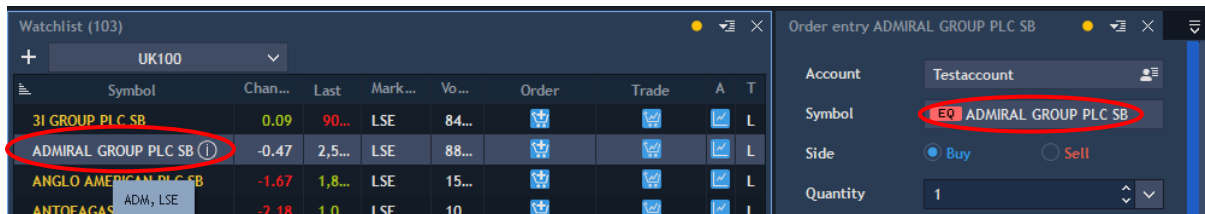
Allow short positio...	No
Allow overnight tr...	Enabled
Tick size	0.001
Lot size	1
Margin requirements	
Margin req.	50 %
Fees	
Order volume, %	0.1 %
Long swap	-2.72738 %
Short swap	-2.27262 %

5. PLACING ORDERS

5.1. Selecting an instrument

You can select an instrument you wish to trade either through the watchlist directly, or through the order entry panel.

The watchlist can be linked to the order entry panel (see 2.5), so that when you click on a market within the watchlist, it is automatically added to the order entry panel, ready for you to add the trade details.



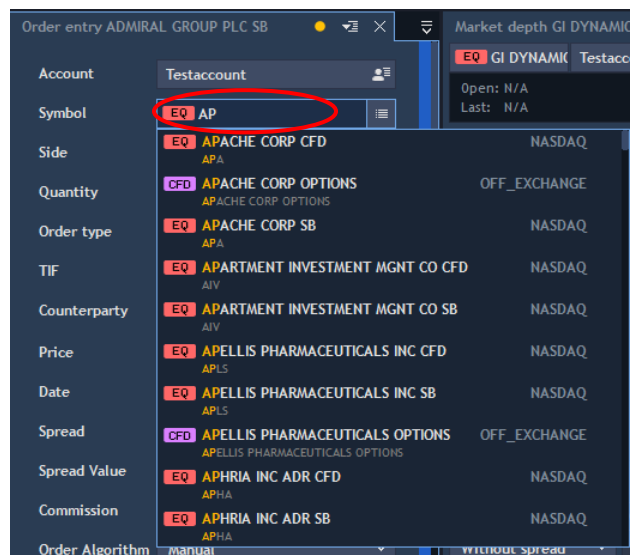
You can also add a 'Trade' or 'Order' column to your watchlist (see 2.4). This will place the relevant button next to each instrument in the watchlist.

This is a close-up view of the watchlist table. It has columns for Symbol, Chan..., Last, Mark..., Vo..., Order, and Trade. The 'Order' and 'Trade' columns contain blue icons. The row for 'ADMIRAL GROUP PLC SB' has red circles around its 'Order' and 'Trade' icons.

Symbol	Chan...	Last	Mark...	Vo...	Order	Trade
3I GROUP PLC SB		0.20	90...	LSE	87...	
ADMIRAL GROUP PLC SB		-0.47	2,5...	LSE	88...	
ANGLO AMERICAN PLC SB		-1.67	1,8...	LSE	15...	
ANTOFAGASTA PLC SB		-2.18	1,0...	LSE	10...	

To select an instrument to trade within the order entry panel, enter its name in the 'Symbol' field, then click on the instrument from the drop-down list.

The instrument will be added to the order entry panel.



5.2. Placing orders via the order entry panel

Trading orders can be placed through the order entry panel.

Dependent on the product type being traded, a variety of orders can be placed. You can place a market order to trade immediately at the current market price, or a limit order to trade once the price reaches a certain level.

The screenshot shows the 'Order entry' window for 'TESCO PLC CFD'. The 'Order type' dropdown menu is highlighted with a red circle. The current order configuration is: Buy, Quantity 1, Market order type, Day TIF, SL price 217.85, SL offset 0.00 GBP (0%), TP price 221.65, and TP offset 0.03 GBP (0%). The current market price is 218.00 and the bid/ask spread is 218.20.

Select the direction of trade, either 'Buy' or 'Sell', and the quantity you wish to trade.

Select your target price level (if appropriate) and your 'time in force' (TIF). You also have the option to attach a Stop Loss and/or a Take Profit to your order.

Once you are happy with your order entry ticket, click 'Place order'.

5.3. How to view filled orders

Once an order has been filled, you can see the trade details in the filled orders panel. This panel can be added to your workspace from the Terminal menu. Within the table you can view your filled orders over various time ranges.

Date/Time	Symbol	Side	Quantity	Price	Execution fee	Net P/L	Trading excha...	Order type
07/09/2020...	VODAFONE P...	Sell	1	116.68	0.00 GBP	0.00 GBP	LSE	Market
04/09/2020...	ASIMILAR GR...	Sell	2,000,000	15.000000	0.00 GBP	0.00 GBP	LSE	Market
04/09/2020...	ASIMILAR GR...	Sell	1,250,000	15.000000	0.00 GBP	0.00 GBP	LSE	Market
04/09/2020...	ASIMILAR GR...	Sell	2,000,000	15.000000	0.00 GBP	0.00 GBP	LSE	Market
04/09/2020...	ASIMILAR GR...	Buy	2,000,000	15.000000	0.00 GBP	0.00 GBP	LSE	Market
04/09/2020...	CASPIAN SUN...	Sell	50,000	15.0000	0.00 GBP	2,397.50 GBP	LSE	Market
04/09/2020...	MESH HOLDIN...	Sell	2,156,280	30.0000000	0.00 GBP	-19,682.32 G...	LSE	Market
04/09/2020...	ACHIKO LTD SB	Sell	230,128	0.990	0.00 GBP	-511.66 GBP	SWX	Market
02/09/2020...	GBP/USD IT C...	Sell	3	1.33215	-30.06 GBP	236.95 GBP	OFF_EXCHAN...	Market
02/09/2020...	BATM ADVANC...	Buy	100	130.0000	-25.00 GBP	-7.00 GBP	LSE	Market
02/09/2020...	BATM ADVANC...	Buy	100	130.0130	0.00 GBP	17.98 GBP	LSE	Market
02/09/2020...	BATM ADVANC...	Buy	100	130.1300	0.00 GBP	17.87 GBP	LSE	Market

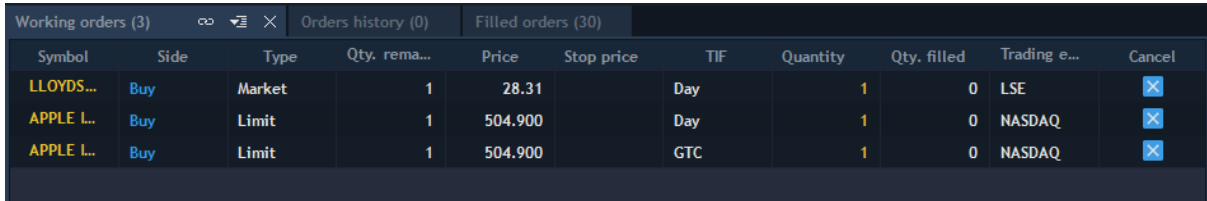
The filled orders data can also be exported into Excel for record-keeping purposes. Right-click anywhere on the table, select 'Export' and choose your preferred data format.

6. AMENDING AND CANCELLING ORDERS

6.1. Locating working orders

To see your working orders, select the working orders panel from the Terminal menu.

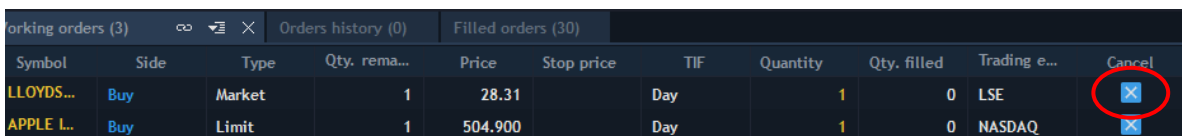
From this panel you can cancel or amend your orders.



Symbol	Side	Type	Qty. rema...	Price	Stop price	TIF	Quantity	Qty. filled	Trading e...	Cancel
LLOYDS...	Buy	Market	1	28.31		Day	1	0	LSE	<input type="checkbox"/>
APPLE L...	Buy	Limit	1	504.900		Day	1	0	NASDAQ	<input type="checkbox"/>
APPLE L...	Buy	Limit	1	504.900		GTC	1	0	NASDAQ	<input type="checkbox"/>

6.2. Cancelling a limit order

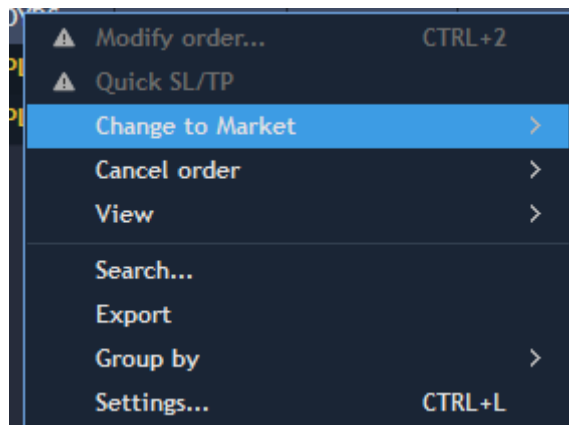
To cancel a limit order in the working orders panel, click the blue Cancel checkbox.



Symbol	Side	Type	Qty. rema...	Price	Stop price	TIF	Quantity	Qty. filled	Trading e...	Cancel
LLOYDS...	Buy	Market	1	28.31		Day	1	0	LSE	<input type="checkbox"/>
APPLE L...	Buy	Limit	1	504.900		Day	1	0	NASDAQ	<input type="checkbox"/>

6.3. Changing a limit to a market order

To change a limit order into a market order, right-click on the order in the working orders panel and select 'Change to Market' from the drop-down menu.



Confirm you would like to amend this order, and it will now be filled immediately at the market price as a market order.

7. CLOSING POSITIONS

7.1. Locating open positions

To view your open positions, select the positions panel from the Terminal menu. This will show all your individual open positions. From here you can modify or close your positions.

Symbol	Side	Quantity	Open price	Current price	Fee	Net P/L	Pos. value	Close	Trading ex...
APPLE INC TEST CFD	Long	1	505.050	120.960	0.00 GBP	-295.02 G...	92.13 GBP	✕	NASDAQ
APPLE INC TEST CFD	Long	1	503.850	120.960	0.00 GBP	-294.10 G...	92.13 GBP	✕	NASDAQ
APPLE INC TEST CFD	Long	1	499.000	120.960	0.00 GBP	-290.37 G...	92.14 GBP	✕	NASDAQ
ASIMILAR GROUP PLC...	Long	4,000,000	2.506250	27.972000	0.00 GBP	990,461.3...	1,118,880....	✕	LSE

To view a list of aggregated positions, select the positions balance panel from the Terminal menu. This will show all your open positions aggregated into one shape per instrument.

Symbol	Net position qty.	Break-even po...	Current price	Gross P/L	Gross exposure	Net exposure	Position value
GERMANY 30 IT SB	1	13,060.6	12,809.5	-197.59 GBP	10,256.88 GBP	10,256.88 GBP	10,059.29 GBP
BATM ADVANCED COMM SB	-24,399	142.7324	112.1120	7,471.06 GBP	34,825.27 GBP	-34,825.27 GBP	27,354.20 GBP
APPLE INC TEST CFD	3	502.633	111.810	-922.61 GBP	1,184.19 GBP	1,184.19 GBP	261.58 GBP
VODAFONE PLC TEST CFD	98	116.68	116.15	-0.51 GBP	114.34 GBP	114.34 GBP	113.82 GBP
GBP/NZD IT SB	-2	1.98930	1.93056	1,174.70 GBP	39,785.90 GBP	-39,785.90 GBP	38,611.20 GBP
GBP/USD IT SB	2	1.30872	1.27347	-705.00 GBP	26,174.40 GBP	26,174.40 GBP	25,469.40 GBP
EUR/NZD IT SB	-1	1.76425	1.77527	-110.20 GBP	17,642.50 GBP	-17,642.50 GBP	17,752.70 GBP

7.2. Closing individual or multiple positions

There are two ways to close a position within the positions panel.

Right-clicking on a position will bring up a drop-down menu with the option to 'Close position'.

Alternatively, you can add the option 'Close' to your column headings within the positions panel. This will add a close button for each open position. Simply click on the blue button to close the individual position.

To close multiple positions at one time, select one of the three 'Close all' options.

Modify position	CTRL+2	503.850	120.050	0.00 GBP
▲ Modify SL to breakeven				
Quick SL/TP	>	499.000	120.050	0.00 GBP
Close position	>	Close position 3313371 CTRL+1		
▲ Reverse	>	▲ Close all by selected symbol		
Import positions...		▲ Close all for selected account		
View	>	▲ Close all positions...		
Search...		1.98945	1.96327	0.00 GBP
Export		1.30872	1.29871	0.00 GBP
Group by	>	13,060.6	12,912.1	0.00 GBP
Settings...	CTRL+L	116.68	107.20	0.11 GBP

8. VIEWING PRICE CHARTS

Our platform allows you to view detailed price charts for individual instruments. The chart panel can be linked to the watchlist panel (see 2.5), so that when you select an instrument in your watchlist, corresponding chart information will be displayed.

Within the chart panel you can add a wide range of technical indicators and drawing objects to analyse the price data.

You can overlay different instruments for comparison, change the chart intervals or the overall time period, or change the price data from bid to last or ask.

You can also choose from a range of different chart styles. Simply right-click on the chart to bring up more options.

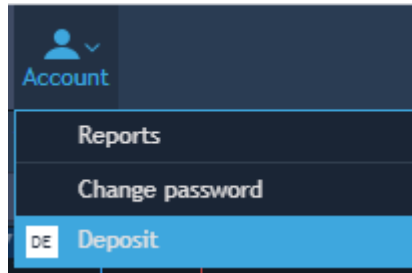
Click along the price axis to set a price alert. Or activate the trading mode to place market or limit orders directly from the chart.

You can also see your open positions and orders marked on the chart, allowing you to close a position directly or click and drag to adjust your order level.

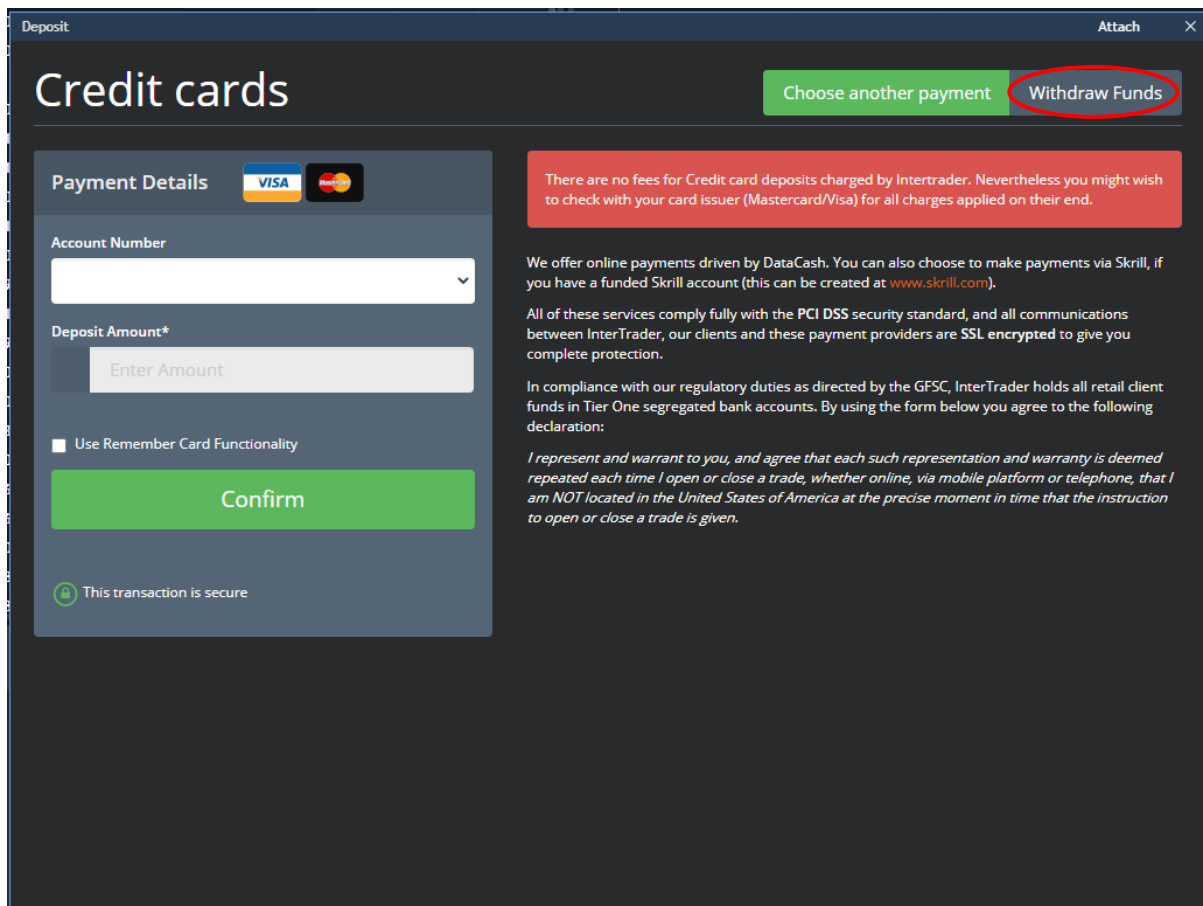


9. DEPOSITS AND WITHDRAWALS

At the top of the platform, click the drop-down next to Account, then select 'Deposit' to begin making a deposit or withdrawal.



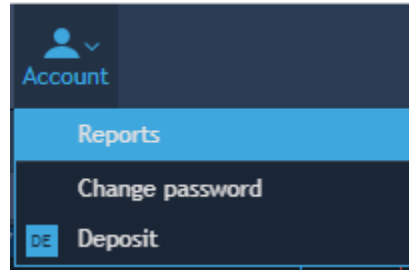
This will bring up the account management window. Select your account and follow the instructions to make an online deposit to your account, or click 'Withdraw Funds' to submit your withdrawal instructions.

A screenshot of a 'Deposit' window. The window title is 'Deposit' and it has a close button 'x' in the top right corner. The main heading is 'Credit cards'. There are two buttons: 'Choose another payment' and 'Withdraw Funds', with the latter circled in red. Below the heading, there is a 'Payment Details' section with 'VISA' and 'MasterCard' logos. It includes a dropdown for 'Account Number', a text input for 'Deposit Amount*' with the placeholder 'Enter Amount', and a checkbox for 'Use Remember Card Functionality'. A large green 'Confirm' button is at the bottom of this section. A security notice at the bottom left says 'This transaction is secure'. To the right of the form, there is a red warning box stating: 'There are no fees for Credit card deposits charged by Intertrader. Nevertheless you might wish to check with your card issuer (Mastercard/Visa) for all charges applied on their end.' Below this, there is a paragraph: 'We offer online payments driven by DataCash. You can also choose to make payments via Skrill, if you have a funded Skrill account (this can be created at www.skrill.com).' Another paragraph states: 'All of these services comply fully with the PCI DSS security standard, and all communications between InterTrader, our clients and these payment providers are SSL encrypted to give you complete protection.' A final paragraph reads: 'In compliance with our regulatory duties as directed by the GFSC, InterTrader holds all retail client funds in Tier One segregated bank accounts. By using the form below you agree to the following declaration: I represent and warrant to you, and agree that each such representation and warranty is deemed repeated each time I open or close a trade, whether online, via mobile platform or telephone, that I am NOT located in the United States of America at the precise moment in time that the instruction to open or close a trade is given.'

10. RUNNING REPORTS

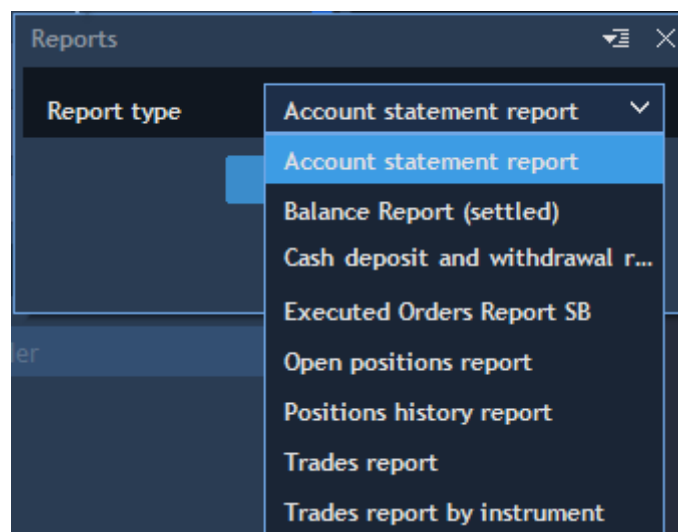
There are several different reports you can generate from the platform, the majority of which can be run with a date range of your choice.

To run a report simply click the Account drop-down at the top of the platform and select 'Reports' from the menu.



This will open a new pop-up box, giving you the option to select the type of report you wish to run, and your preferred date range.

- **Account statement report** displays a live view of your account
- **Balance report (settled)** displays an overview of the account balance after transactions and fees have been applied over a period of your choice
- **Cash deposit and withdrawal report** displays all withdrawals and deposits made over a period of your choice
- **Executed orders report** displays a list of the orders that have been executed on the account over a period of your choice



- **Open positions report** displays a list of all your current open positions
- **Positions history report** displays a backdated list of historical positions that have been held on the account
- **Trades report** displays a list of historical trades over a period of your choice
- **Trades report by instrument** displays a list of historical trades in one selected instrument, over a period of your choice

All these reports can be run directly from the platform, and exported into Excel, CSV or HTML format.